

University of Wollongong / INTI College Sarawak

Bachelor of Computer Science

Automated WEP Decryptor

By : Justin Chigozie Chukwu
: Olu Victor
: Sadiq Safana Ibrahim
: Ahmad Ahmad

Session : May 2009

Submitted : 27th July 2009

Preliminary User Manual

TABLE OF CONTENT

Confirming package content1

1. Requirement1

 1.1. System requirement1

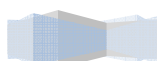
 1.2. Software requirement1

2. Cracking a WEP wireless network 2-3

3. Terminating cracking process4

4. Other features5

5. About us 6-7



CONFIRMATION OF PACKAGE CONTENT

The complete package contains the following:

- Installation Wizard Compact disk.
- Compatible Network driver compact disk.

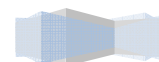
1. REQUIREMENTS

1.1. SYSTEM REQUIREMENT

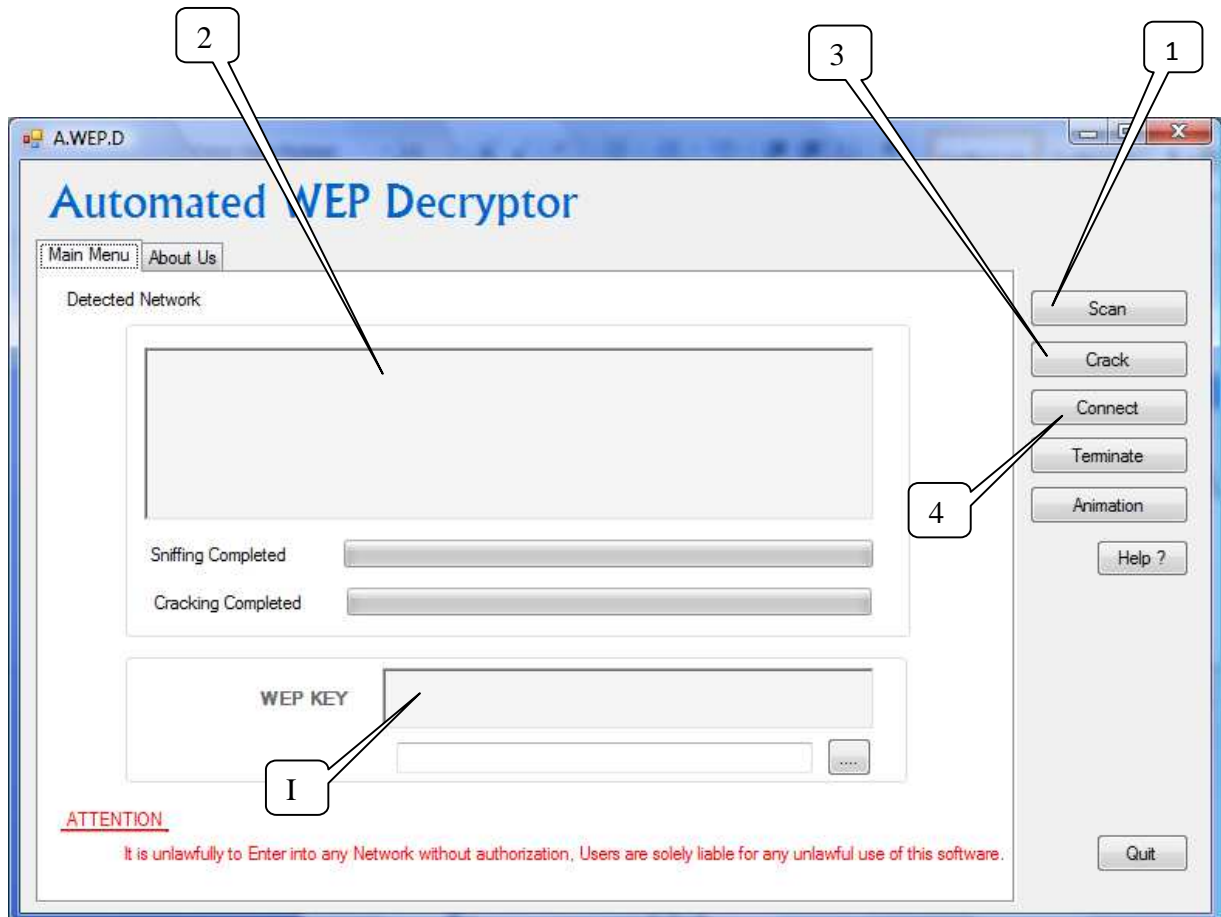
- 1.1.1. Windows Vista or XP preinstalled with default Settings.
- 1.1.2. Supported Wireless Adapter (Marvell-based wireless adapters, Atheros-based wireless adapters and Ralink wireless adapters).
- 1.1.3. 256MB Memory (Minimum).
- 1.1.4. 1 GB available Hard Disk Space (recommended).

1.2. SOFTWARE REQUIREMENT

- 1.2.1. Microsoft .Net framework 3.5 or newer version.

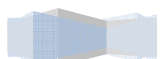


2. CRACKING A WEP WIRELESS NETWORK



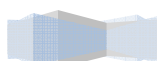
When the software is initialized, the above screen is the default Interface. The Screen has been labeled based on the sequence of operation.

1. Click **Scan** (labeled 1) to detect all available WEP Wireless Networks within user range.
2. **Text Area** (labeled 2) will display all available wireless Networks, and then highlight the Network you wish to connect to, there after click **crack** (label 3).
3. Click **Crack** (labeled 3) to begin WEP Decryption process.

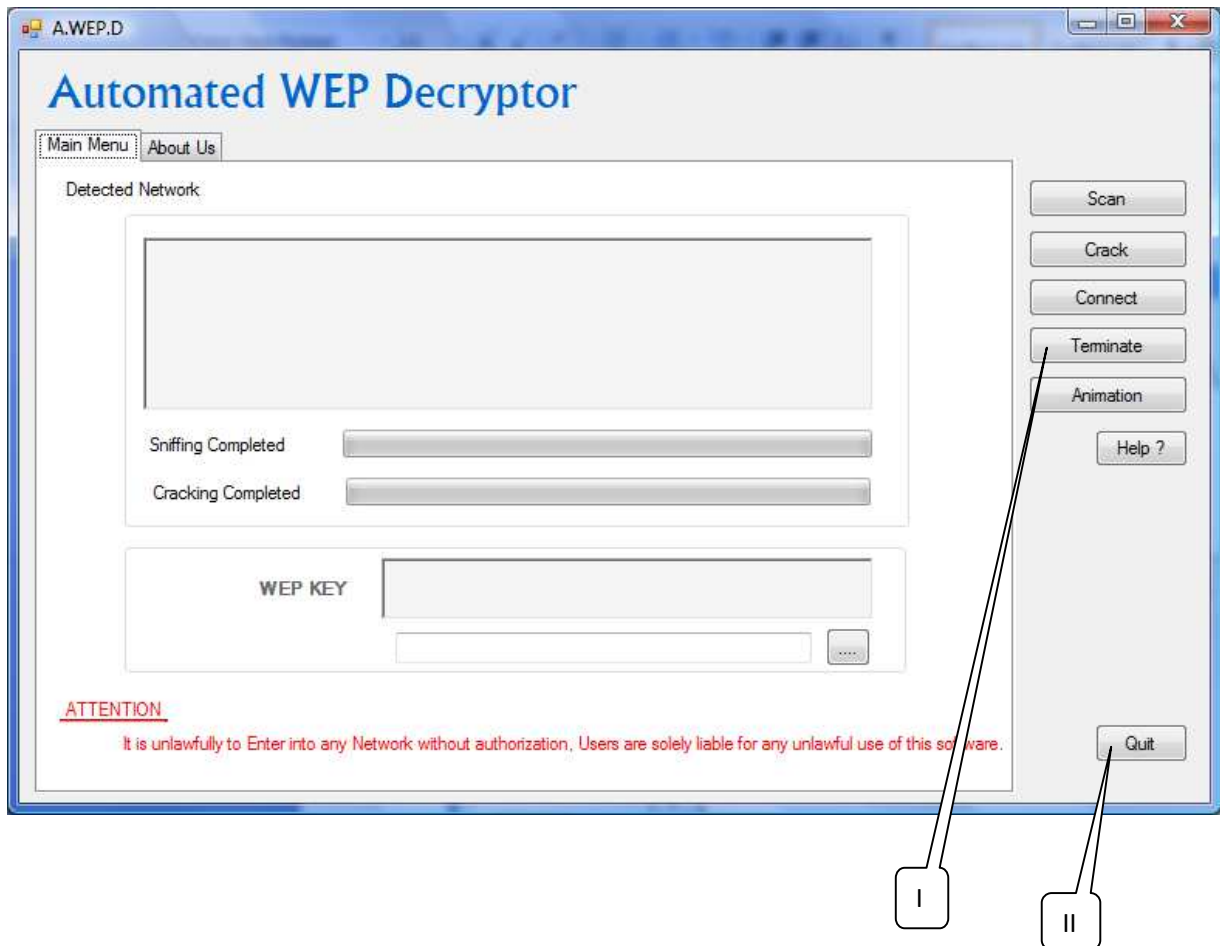


Note: This process will take several minutes.

The WEP key will be displayed on the **Text Area** (labeled I) after the process is completed then, Click **Connect** Button (labeled 4) to connect to the Network.

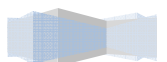


3. TERMINATING CRACKING PROCESS

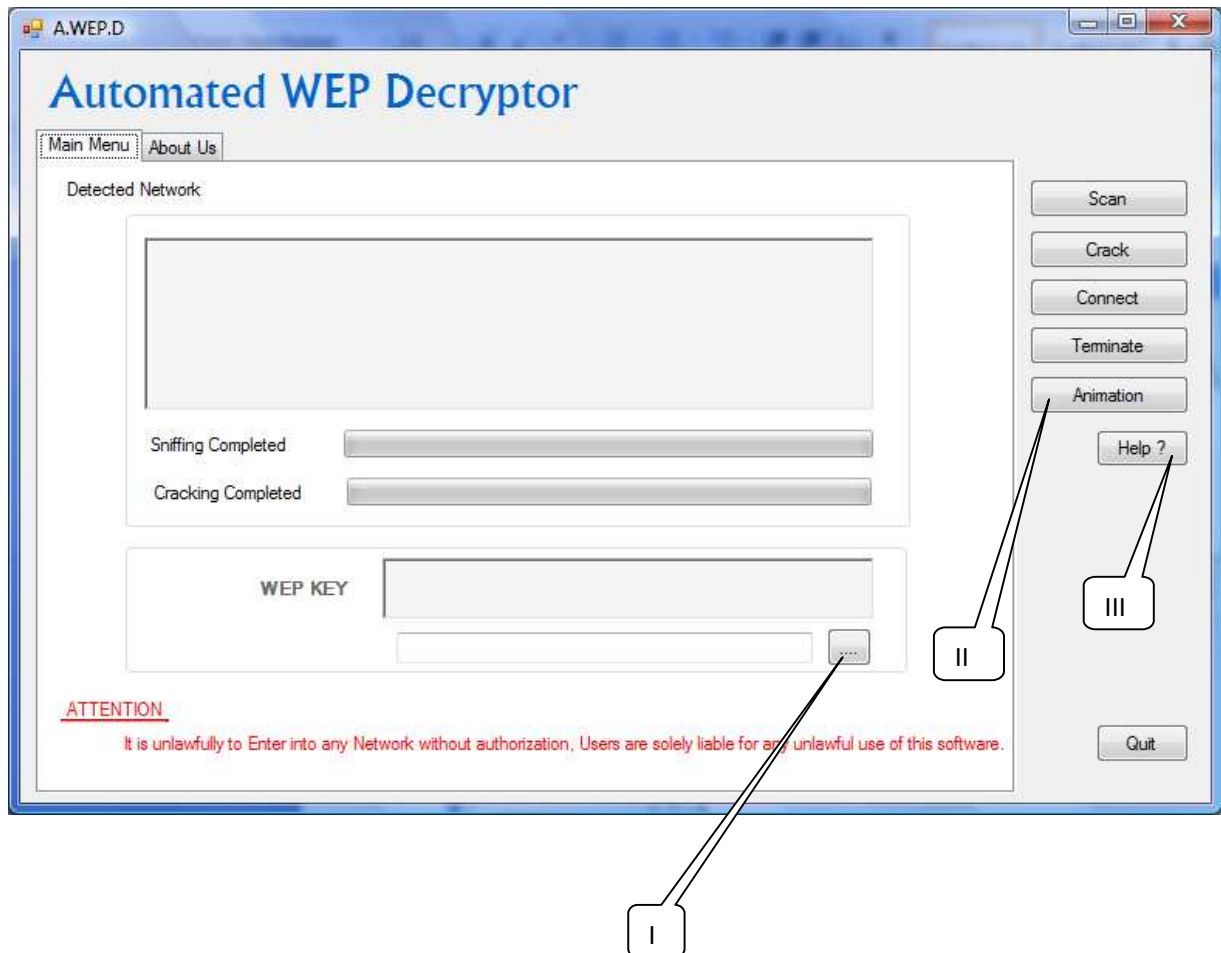


- To Terminate Cracking process, Simply Click **Terminate** (labeled I). During the cracking process, if a user decides to connect to a different network, just click **Terminate** (labeled I) and rescan to connect to the desired Network.
- Click **Quit** exiting Application.

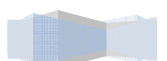
Ensure that you close the application after use to reduce the number of running applications and save Central Processing Unit Memory.



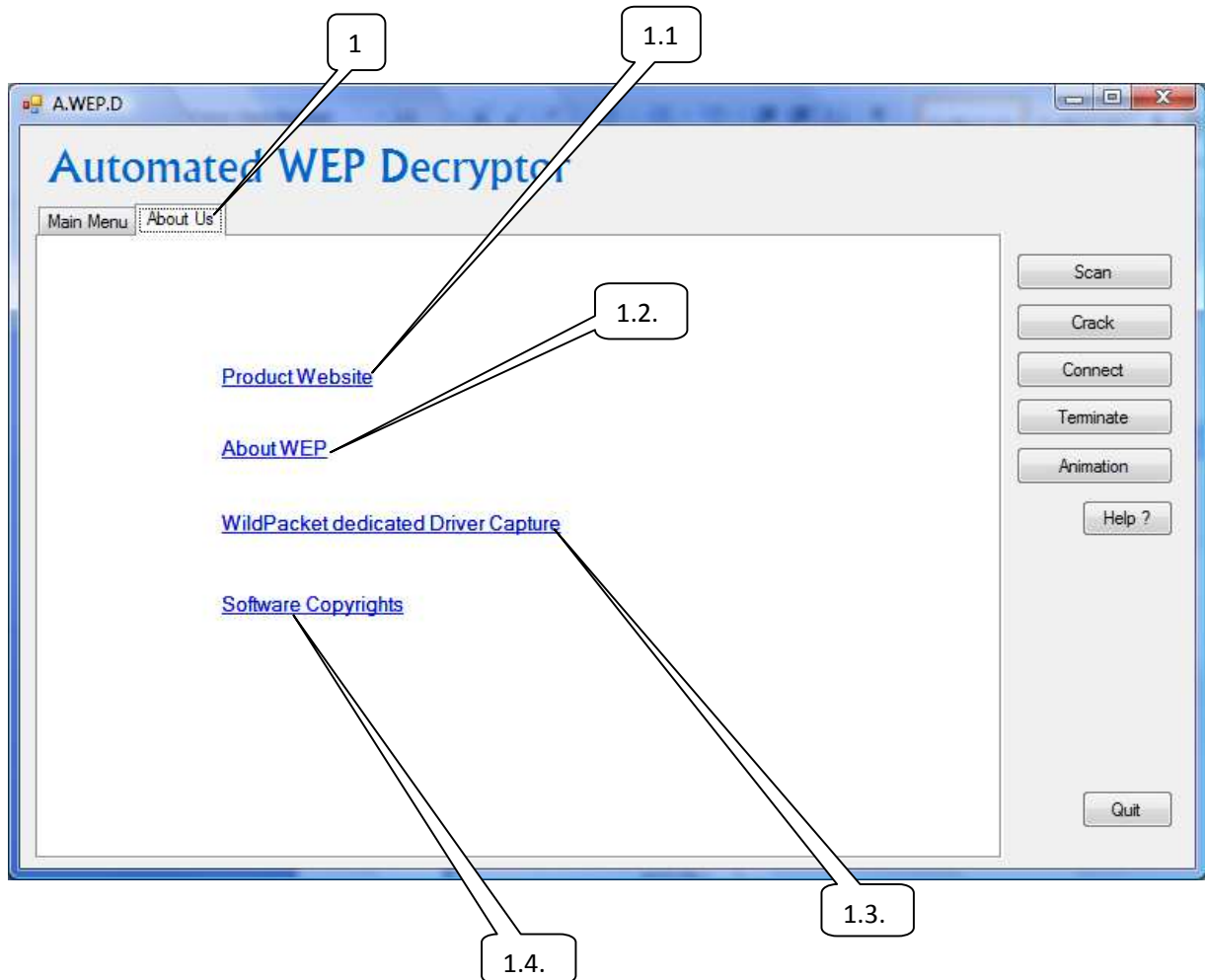
4. OTHER FEATURES



- **Browse Folder:** Click the Button labeled I to browse to view Captured Packet and Password File.
- Click **Animation** (Labeled II) to view Software Video Demo.
This button provides a demo of how the software is used to ease understanding of the software.
- Click **Help?** (Labeled III) to view solutions to related issues.



5. ABOUT US

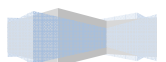


1. Click **About Us** (labeled 1) on the Tab Menu to open About Us Menu.

1.1. Click **Product Website** (label 1.1.) to visit project Website.

This link connects to the project Website which contains information on how the software was built, by who and when.

1.2. Click **About WEP** (label 1.2.) to learn about WEP.



This link provides introductory knowledge about Wired Equivalent Privacy for users who do not have previous knowledge about it.

1.3. Click **WildPacket Dedicated Driver Capture** (label 1.3.) to link to packet capture download Website.

1.4. Click **Software Copyrights** to view copyright law related to the software.

